

Film 19.

XIX .

STAR MORGUE

- 1) Sept. 1904 Kazerne, Johannesburg
SWE The Mule Yard



We have some of the photos of Film 19. Items marked.

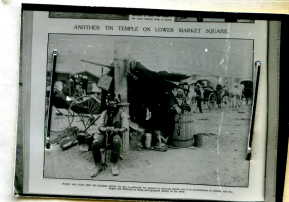
- 2) The Illustrated Star: Town & Country Journal
15/2/1913

"What shall he have who killed the deer?"
Notable Johannesburg itinerant purveyor of
game and reasonable delicacies.



- 3) The I. Star: Town & Country Journal
15/2/1913

Another Tin Temple on Lower Market
Square.
Notice who looks after the tramline points.



or Native?

- 4) The Illustrated Star Pictorial Supp. 29/7/1911
"Govt. Dept. of White Labour"



- 5) The Ill. Star Pictorial Supp. 3/8/1911

a) President Street West Old Jhb.

b) President Street East New Jhb.



c) — X

- 7) I.S. Pic. Supp. 19/8/11

7A) Outside the Law Courts
"The Laws Delays"

- 8) Langlaagte Orphanage IS Pic. Supp.
26/8/11

?

?

~

XIX. 19.

9)

- 10) Il.S.P. Supp. 2/9/11
"Clothed and in their right minds"
Kaffir Family in Jhb. Market Sq.



- 11) Ul.Star Pic.Supp. 6/5/11
"Music Hath Charms: The Blind Fiddler and his Hearers"



- 12) I.S.P. Supp. 6/5/11
"Looking Pleasant: A Kaffir Family in Town"



- 13) I S P S 17/6/11
"The Hoop Driver"



- 14) I S P S 17/6/11 *Destination*
"Off to an Obvious Distraction"

- 15) SWE Jhb. 16/1/04
"A Model Colony: Central Portion of the East London Kaffir Location"

- 16) SWE 20/2/04
Cartoon "Not Unknown in Jhb"
A black customer wants his boots cleaned by a white shoeblack



19. XIX

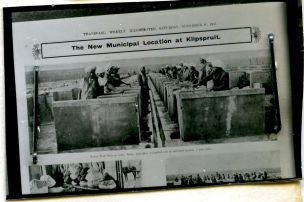
17) Salvation Army Industrial Class at Vrededorp Tvl. Weekly Ill 5/8/07



18) Tvl. W. Ill 2/11/07
"Squatters on Govt. ground, Vrededorp - No Rent, No Rates, No Taxes"
(4 Pictures)



19) T W Ill 9/11/07
"The New Municipal Location at Klipspruit!"
"Native Wash Boys at Work - Every wash place is supplied with pure water"



20) T W Ill 9/11/07
"One Single Men's Quarters"
The

22



21) T W Ill 9/11/07
"The Married People's Section"



22) T W I 18/1/08
"The Asiatic Passive Resisters"
Crowd Outside Police Court while leaders are being sentenced.



23) T W I 25/1/08
"Hotbed of Drunkenness and Vice (?)"
A tour of inspection of the Native Loc. to prove whether:
"A typical location on Sunday afternoon: every hut packed with male & female natives drinking kaffir beer"



24) The Tour of Inspection



19 XIX

25) ✓ SWE Jhb. 8/7/05

"Chinese disturbances at Wit. Deep Mine"
'Prisoners'

