

Present: Thami, Judy, Steve, Ellen.

Agenda: (1) ~~Finance~~ ~~Funding~~ ~~Training~~ scheme. (2) ~~Meeting~~ (3) Mural (4) Posters (5) A.O.B.

(1) Finance

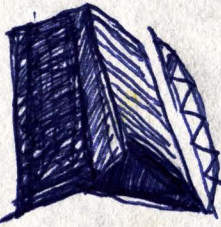
- a. Judy to keep until elections ~~in 2 weeks~~ <sup>in 2 weeks -</sup>
- b. Ellen's donation - P700 from exhibition sales.

Meeting agrees it should be allocated to discuss next week Tues.

Canadian High Com  
c. ~~Case~~ Snow has P100,000 in "Mission Administered Funds" for Botswana.

- Also discuss next meeting & inform executive.

~~60~~  
~~300~~  
~~256~~  
~~700~~  
~~416~~  
~~500~~  
~~7900~~



(2) Posters

- a. Zimbabwe Book Fair <sup>Reprint</sup> posters
- b. June 16 <sup>Thami</sup> June 26 - Judy



(3) Training scheme: Next week to draw up programme.

Report back - Judy. next week

1.1.14

(4) Murals:

(1) Naledi mural for this weekend -  
Ngwedi to draw on Sat. 9:00

---

---

~~1~~

4

Seleba - 51706

**Collection Name: MEDU ON-LINE**

***PUBLISHER:***

*Publisher:* Historical Papers Research Archive, University of the Witwatersrand

*Location:* Johannesburg

©2022

***LEGAL NOTICES:***

**Copyright Notice:**

All materials on the Historical Papers website are protected by South African copyright law and may not be reproduced, distributed, transmitted, displayed, or otherwise published in any format, without the prior written permission of the copyright owner.

**Disclaimer and Terms of Use:**

Provided that you maintain all copyright and other notices contained therein, you may download material (one machine readable copy and one print copy per page) for your personal and/or educational non-commercial use only.

People using these records relating to the archives of the Historical Papers Research Archive, at the University of the Witwatersrand, Johannesburg, are reminded that such records sometimes contain material which is uncorroborated, inaccurate, distorted or untrue. While these digital records are true facsimiles of paper documents and the information contained herein is obtained from sources believed to be accurate and reliable, Historical Papers, University of the Witwatersrand has not independently verified their content. Consequently, the University is not responsible for any errors or omissions and excludes any and all liability for any errors in or omissions from the information on the website or any related information on third party websites accessible from this website.

This document is part of the MEDU Art Ensemble Consolidation Project, Historical Papers Research Archive, University of the Witwatersrand, Johannesburg, South Africa.